

Gypsol Zero Laitance (ZL)

Cut floor installation costs by 66%

Gypsol Zero Laitance (ZL) is set to change the game for modern construction by eliminating one of the most time-consuming stages of screed installation. Gypsol ZL produces no laitance as it dries, meaning no sanding to remove the surface laitance is required. This innovation simplifies the installation process, reduces labour demands, and saves valuable time on site.



Gypsol Zero Laitance

Gypsol Zero Laitance is an advanced liquid screed designed to simplify the installation process while delivering exceptional performance. Built on trusted Gypsol technology, it eliminates the formation of surface laitance as it dries, removing the need for sanding laitance and significantly reducing installation time and labour. The result is a faster, cleaner flooring solution fully compatible with modern construction methods and underfloor heating systems.

Key Benefits

Zero Laitance

Eliminates the need for sanding laitance after installation

Faster Installation

Speeds up project timelines by removing a key step in the process

Reduced labour costs

Less time on site means lower labour requirements

Energy efficient

88% lower embodied carbon than traditional screeds

Fast drying

At 50mm* Gypsol ZL is dry in just 14 days and is ready for foot traffic in 48- 72 hours

Greater Bond

Gypsol ZL creates enhanced adhesion and bond performance

Simple batching process

Streamlined mixing and technical support

Perfect for underfloor heating

Faster heat transfer for improved energy efficiency with UFH

Quality assurance

Our Gypsol adheres to the Quality Assurance processes outlined, as per the BBA and British Standards, we have achieved ISO certificates; 9001, 14001, 45001, and 50001.

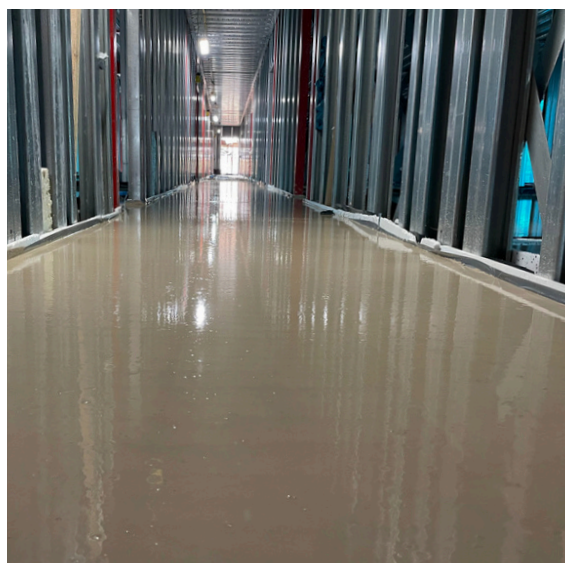
Supply & logistics

Currently available within this range of screeds; Rapide ZL, HTC ZL, TS15 ZL, and XS ZL, with more products coming soon.

Packaging options

Gypsol Zero Laitance (ZL) is currently supplied as an additive. The additive is dosed during batching to ensure consistent performance and optimal screed flow characteristics.

*in controlled laboratory conditions



Carbon footprint

A saving can be made by switching to Gypsol flowing screed with the current carbon calculations.

Sand cement screed- 24.1kg CO ₂ eq per m ²	-	Gypsol screed- 2.96kg CO ₂ eq per m ²	=	Saving of- 21.14kg CO ₂ eq per m ²
--	---	---	---	--

Typical potential CO2 savings

(in comparison with 1:4 cement sand screed used floating in accordance with BS EN 8204:1:2003)

Property type	Floor size (m ²)	Potential CO ₂ saving (eq per m ²)
House	50	1050
Large house	150	3170
Primary school	2500	52,850
Hospital	12000	253,680

Our Environmental Product Declaration is available online:

<https://www.lkabminerals.com/product/gypsol-binder>

Customer Testimonial

"LKAB's range of Anhydrite options has long been my number one choice over the past 16 years. The quality, consistency and robustness are second to none. In an industry where neglect of the correct post installation guidelines can be rife, the missing piece in their puzzle was a Zero Laitance option. I've been really pleased to bring this to live environments in the early stages and am delighted with the results. I'm a big believer in this development, and I'm thrilled to say my enthusiasm is being shared by our customers. A faster drying, zero laitance solution using LKAB's technology and suppliers – every box ticked, and I look forward to seeing its growth." - **Darren Merideth (Niche Energy)**

Contact

Gypsol Orders
gypsolorders@lkab.com
0800 622 6023

Logistics

Pricing available upon request by our channel partners

Learn more at
www.lkabminerals.com

For our guidance and safety information,
please see our Gypsol documentation





LKAB Minerals is a leading supplier of high-quality industrial minerals, offering a diverse range of products and services to industries such as construction, steel manufacturing, and agriculture. LKAB Minerals focuses on delivering innovative solutions that meet the highest environmental and performance standards. As a part of the LKAB Group, the company leverages cutting-edge technology and expertise to provide reliable, value-added products that support the global transition to a better future.

For more information, visit www.lkabminerals.com